

Match the picture to the word!

brush

flower

train

bald

bedroom

vegetables

coffee

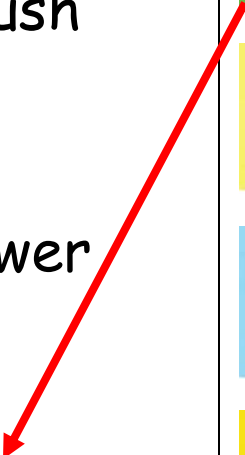
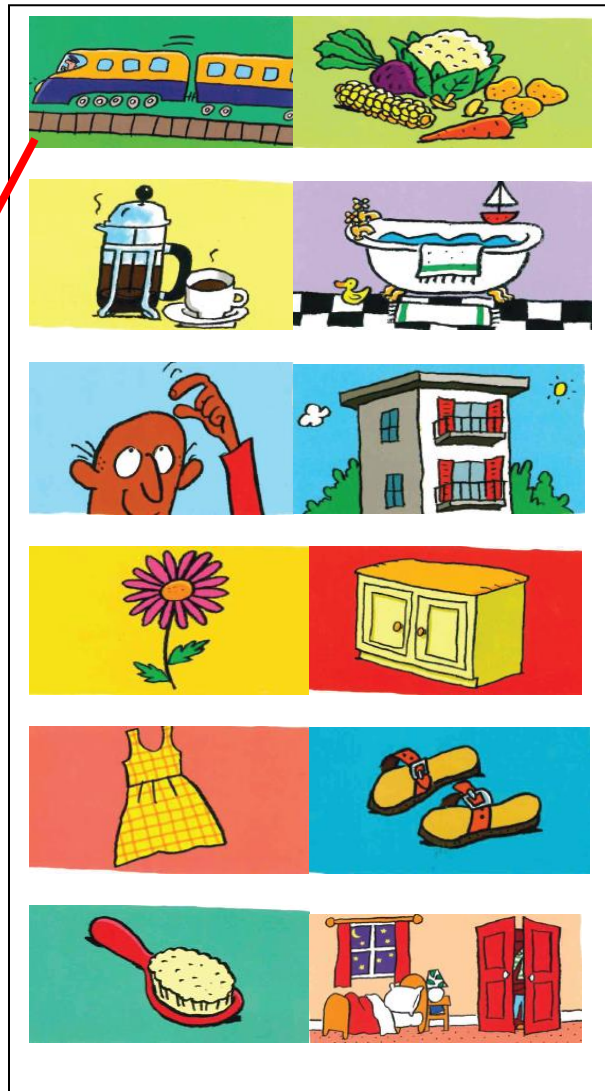
dress

sandals

flat

bath

cupboard



Yes or no?

- I wear sandals on my feet. **YES** / ~~NO~~
- Apples and bananas are vegetables. YES / NO
- Trains are very slow. YES / NO
- Coffee is brown. YES / NO
- Flowers have a bad smell. YES / NO



T r a i n



F _ _ _ _ _



V _ _ _ _ _



C _ _ _ _ _



C _ _ _ _ _



D _ _ _ _ _



B _ _ _ _



S _ _ _ _ _



B _ _ _ _



B _ _ _ _ _

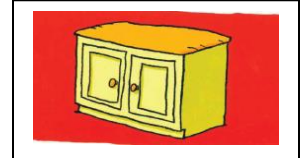
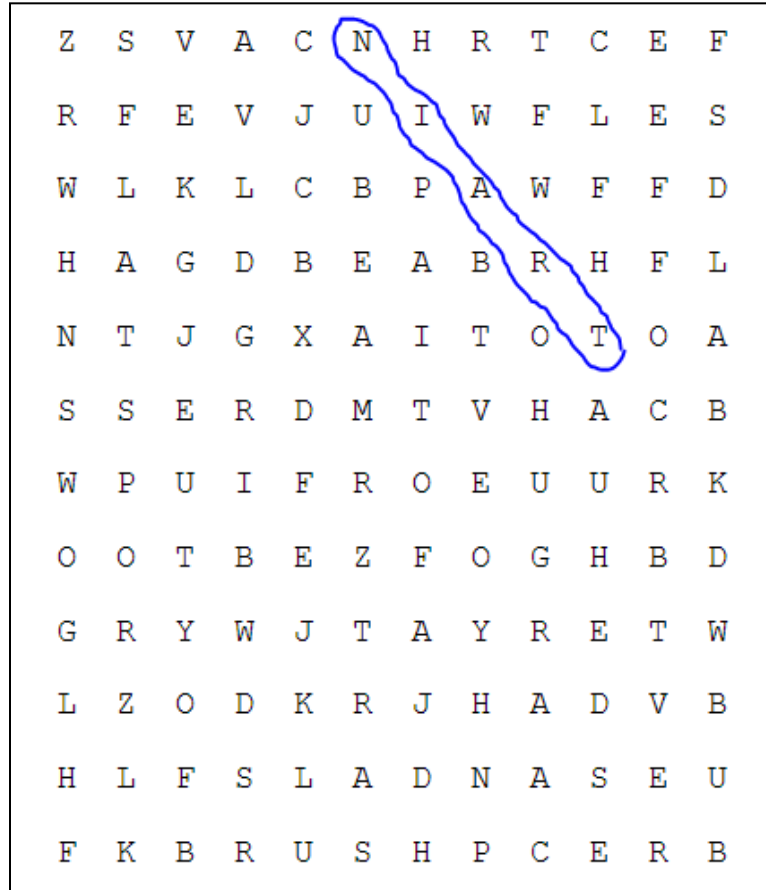
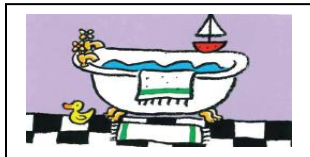
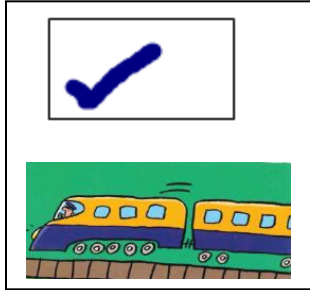


F _ _ _ _ _

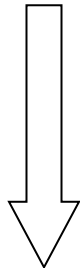


B _ _ _ _ _

Find the words!



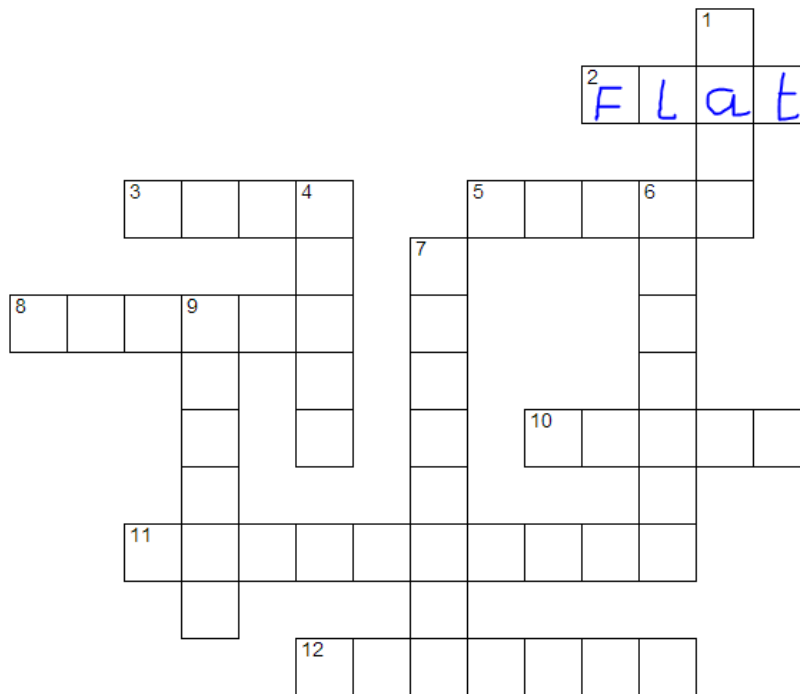
Now choose
the correct
word.



- 1) The place where I sleep is the ~~kitchen~~ / **bedroom**.
- 2) Coffee is **hot** / cold.
- 3) I wear sandals when it is **hot** / cold.
- 4) In the **park** / **bathroom** there are flowers.
- 5) If you are bald you have **lots of** / **no** hair.
- 6) **Boys** / **girls** wear dress.
- 7) I use a brush to keep my **hair** / **face** tidy.
- 8) Vegetables are **good** / **bad** for you.

Crossword

Read the clues and complete the crossword.



Clues

Down

- 1 - The thing you sit in to wash yourself.
 4 - Women and girls wear this in the summer.
 6 - You wear these on your feet in the summer.
 7 - This is where you keep your things.
 9 - Something that grows in the garden.

Across

- 2 - A place where people live (it's not a house).
 3 - Someone who does not have hair.
 5 - The item you use to make your hair tidy.
 8 - A brown drink.
 10 - A type of transport.
 11 - Food such as carrots, potatoes and broccoli.
 12 - The place where you sleep.



Berlin, Germany

Berlin is a big city. There are 220 train stations, 10,000 flats and 500 places where they serve coffee. The people in Berlin are very healthy because they always eat vegetables. In the parks in Berlin there are 550 flowers.

Answer the questions below:

- 1) How many train stations are there in Berlin? _____
- 2) How many flats are there in Berlin? _____
- 3) How many coffee shops are there in Berlin? _____
- 4) What do people in Berlin eat? _____
- 5) How many flowers are there in the parks? _____

Choose the correct word:

- In my country most people use trains / buses.
- A banana is a fruit / vegetable.
- I put my books in a cupboard / plastic bag.
- I put sandals on my hands / feet.
- During weddings most women wear a dress / trousers.
- If I don't have a lot of time I take a shower / bath.
- Her grandmother / grandfather is bald.